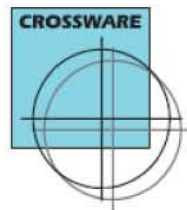


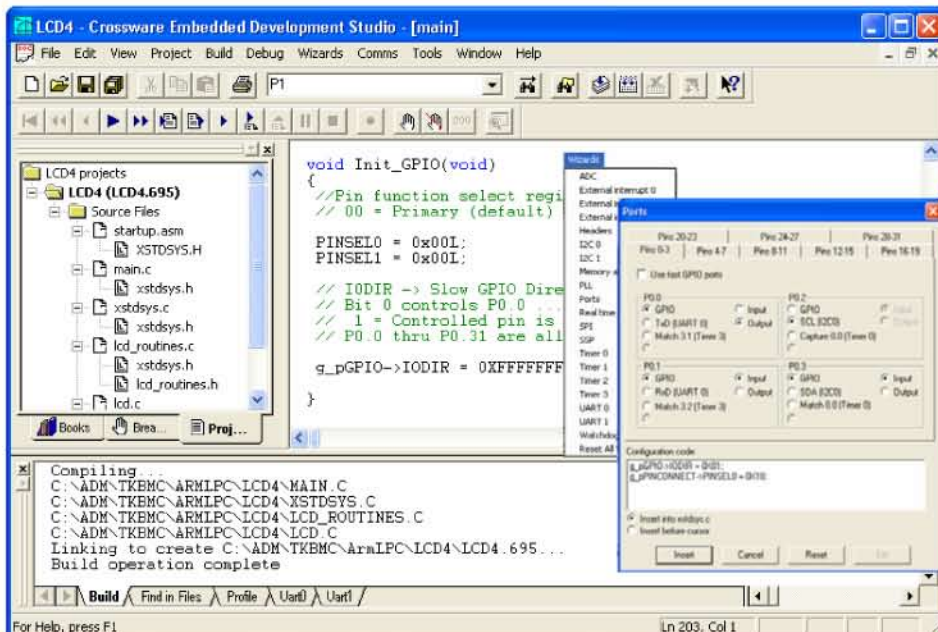
CROSSWARE®

Tools for Embedded Development



ARM 8051 ColdFire 68XXX Z80 8085 6809 6301 68HC11

- **Universal Development Frame**
 - ✓ Multithreaded 32 bit environment
 - ✓ Dockable windows.
 - ✓ Project Tree for Source files.
 - ✓ Dependency Scanning..
 - ✓ Context Coloured Editing.
 - ✓ Startup files for seamless porting.
 - ✓ Integrated Assembler & Linker.
 - ✓ Source Code Browser.
 - ✓ Project Setup Wizard.
 - ✓ Integrated Electronic Manual.
- **ANSI C / C++ Compiler**
 - ✓ Optimizing ANSI Compiler.
 - ✓ Little / Big Endian support.
 - ✓ Support for 32/64 bit Floating Pt.
 - ✓ Smart Pointers.
 - ✓ Multi Parameter Function Pointers.
 - ✓ Code Generator Wizard.
 - ✓ Common Code Merging.
 - ✓ Code Bank Switching Support.
 - ✓ Excellent Code Performance.
 - ✓ Run time Error checking.
- **Relocatable Assembler**
 - ✓ Processor Specific.
 - ✓ Complex Expression evaluation.
 - ✓ Expandable Macros & parameter.
 - ✓ Source Level Debug Output.
 - ✓ Code & Data Bank Switching.
- **Relocatable Linker**
 - ✓ for Compiler, Assembler & Library
 - ✓ Call Tree analysis for functions.
 - ✓ Positions relocatable segments.
 - ✓ Supports Code & Data Banking.
 - ✓ IEEE695,OMF51 debug output.
- **Virtual WorkShop Simulator**
 - ✓ Full Source Level Debugger.
 - ✓ Simulates peripherals like UART.
 - ✓ Multiple variable watch windows.
 - ✓ Memory & Disassembly Window.
 - ✓ Drag-Drop Source Breakpoint.
 - ✓ Code Coverage & Profiling.
- **Source Level Target Debugger**
 - ✓ Serial , JTAG & USB debuggers.
 - ✓ Local & Global variable support.



Crossware Ltd (U.K) brings to developers the power of sophisticated, next-generation C/C++ compiler technology, the Embedded Development Studio (EDS) , allowing engineers to take full advantage of the highly-popular μ Controller architecture.

The tool chain is able to generate code with the level of execution speed and code density needed for tomorrow's automotive, industrial and telematics applications. The compiler features up-to-date functionalities like code checking, profiling and run-time error checking capabilities.

With the help of EDS you can create and maintain projects with minimum effort. All project-related aspects, such as the application source files, the tool options (compiler, assembler, linker/locator, Simulator / Debugger), file management and the options of the build process, are managed from one single window. File dependencies, as well as the sequence of operations required to build the application, are handled automatically. The Simulator / Debugger is included for debugging your program code with or without target.

The source window is also the main debugging window. It allows you to view source; step through your code; set and clear breakpoints, assertions and code coverage markers; watch and show variables; search for strings, functions, lines and addresses; and evaluate expressions. The source window can display code in C/C++ source, assembly or a mixed mode that allows a simultaneous view on your C/C++ source, intermixed with the corresponding assembly code.

All Crossware product's comes with full documentation in easy-to-use binders. All documents are also available as online PDF files. Every standard products includes technical support and free updates for 12 months.



<http://www.crossware.com>

