

ADM

TKBase

XDS100 - USB EMULATOR

TMS320 DSP Series
Hardware Design Lab

TKBase TMS320 DSP

1. TMS320 DSP/MCU	✓
2. Power Supply	✓
3. IDC Port Connector	✓
4. Reset & Pgm keys	✓
5. Mux Hex Keypad	✓
6. 8 Status LEDs	✓
7. Mux 4x 7Seg Display	✓
8. 16x2 Line LCD	✓
9. I2C,SPI,CAN,McBSP	✓
10. PWM, CAP, QEP	✓
11. I2C RTC, ADC, DAC	✓
12. I2C EEPROM	✓
13. Relay	✓
14. Pot for ADC & LCD	✓
15. Test/ Interrupt key	✓
16. Temperature Probe	✓
17. DC Motor	✓
18. Stepper Motor	✓
19. Elevator	✓
20. LGLite Interface	✓
21. Compiler (Student)	✓


**TEXAS
INSTRUMENTS**


Perfect Educational Solution

TKBase320 is a full featured PC hosted 32 bit DSP μ C training tool aimed at helping the academic world incorporate TMS320 series DSP controller's into their projects and courses so that students have experience with cutting edge technology as well as the most modern tools and software's.

Digital Signal Processor are designed to manipulate digital data that are measured by signal sensors. The objective is to process successive input samples as quickly as possible to be able to generate an output stream of 'new' data in "real time".

Combine TKBase320 with its onboard peripherals, XDS100 Debugger / Emulator, TMS Code Composer Studio Compiler/ Simulator with ADM's versatile 50Mhz LGLite Logic Analyzer and you have a complete, interactive DSP μ C lab. LGLite logic analyzers, pattern generators and frequency counters, allow you to stimulate and monitor TMS320 DSP μ C without the need for any external Digital test instruments.

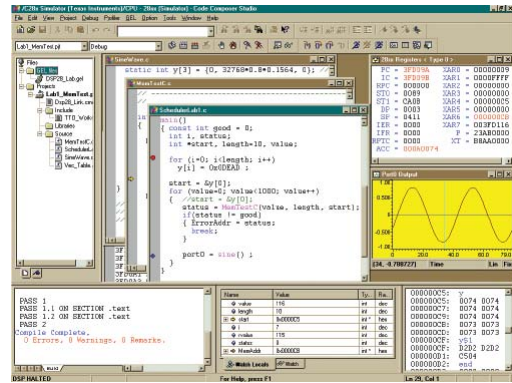
APPLIED DIGITAL MICROSYSTEMS PVT LTD

 D-216, ANSA ESTATE, SAKI VIHAR ROAD, ANDHERI-EAST, MUMBAI 400 072.
 Tel: 022-28470817,022-66924483/84, email: adm ltd@mtnl.net.in

Code Composer Studio — Integrated Development Environment

The Code Composer Studio integrated development environment (IDE) delivers all of the host tools and runtime software support for your TMS320 DSP μ C - based real-time embedded applications.

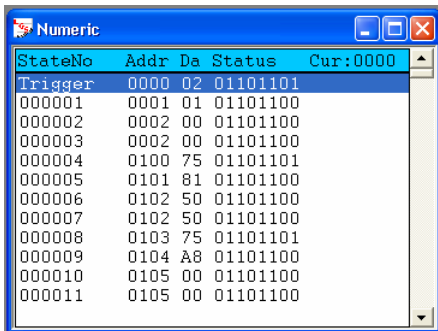
The IDE allows developers of all experience levels to move quickly through each phase of the application development process including designing, coding and building, debugging, analyzing and tuning. Powerful tools and interfaces allow users to get started faster and become productive immediately.



XDS 100 Real-time Debugger / Emulator

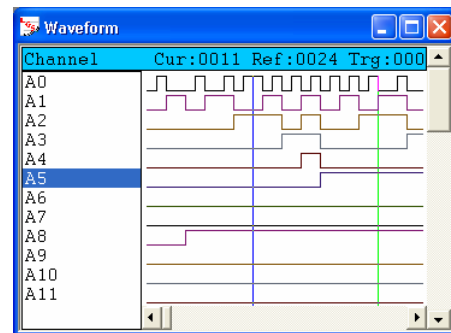
- Emulation Connect/Disconnect, Read/Write memory, registers, watch etc.
- Load program, Run, Halt, Step.
- Software and Hardware Breakpoint support, Real-Time Mode.

LGLite — Integrated Logic Analyzer & Pattern Generator



When use Pattern Generator / Logic Analyzer ?

- When you need to generate digital data stream.
- When you need to look at real time digital data the same way your DSP does.
- When you need to see DSP output data stream.



LGLite is a multi-configurable instrument in one.

1. 50 Mhz Logic Timing Analyzer
2. 50 Mhz Logic State Analyzer
3. 50 Mhz Logic Pattern Generator
4. 50 Mhz Frequency Counter



LGLite pattern generator replaces the sensor system and provides the input digital data streams to the DSP processor. The DSP then executes the real-time signal processing algorithm necessary to meet the design application requirements. The real time output data streams can then be captured by LGLite Logic Analyzer. Several architectural features like arithmetic capabilities, speed of computation can then be completely assessed iteratively for a baseline DSP design.



APPLIED DIGITAL MICROSYSTEMS PVT LTD
D-216, ANSA ESTATE, SAKI VIHAR ROAD, ANDHERI-EAST, MUMBAI 400 072.
Tel: 022-28470817, 022-66924483/84, email: adm ltd@mtnl.net.in